



## HOW TO GUIDES

The following guidance will help you configure your print driver to print an A5 booklet, A4 booklet & a booklet with a card cover.

### Paper weights

Centre staple: 52 – 90 gsm

Half-fold: 52 -209 gsm

### Stapling capacity for centre stapling

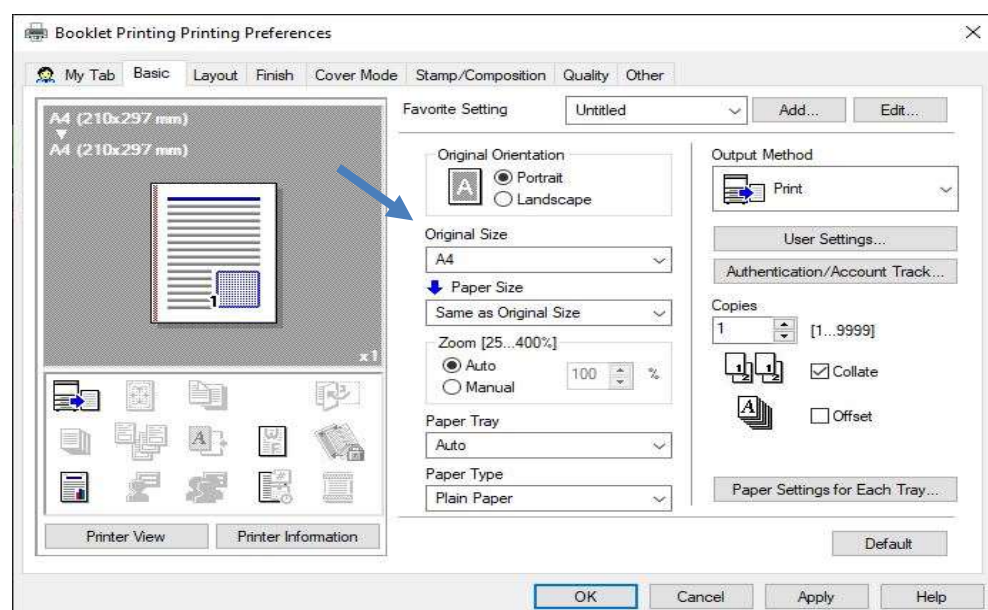
20 sheets (52 – 90 gsm)

19 sheets + cover sheet (19 sheets 90 gsm + 1 sheet 209 gsm)

### Print driver configuration

To create an A5 booklet leave the Original Size as A4

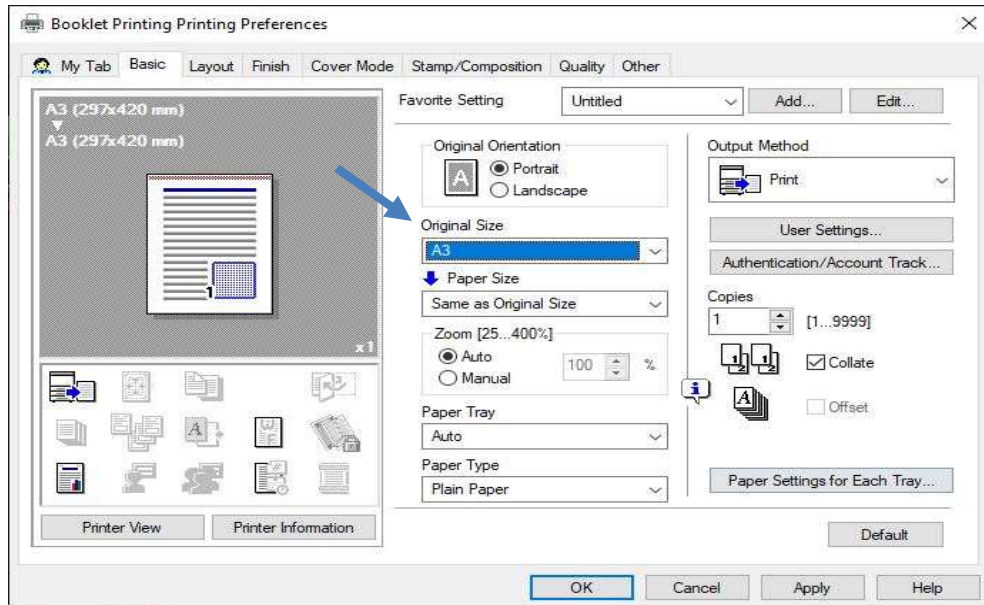
**Paper must be loaded in landscape orientation for folding A5 booklets**



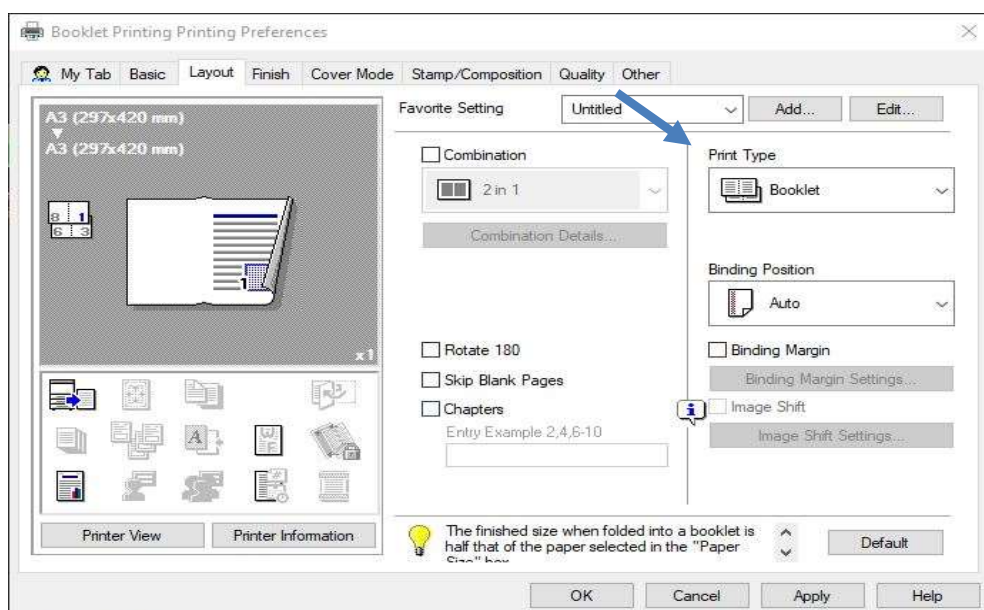


## HOW TO GUIDES

To create an A4 booklet you will need to change the Original Size to A3



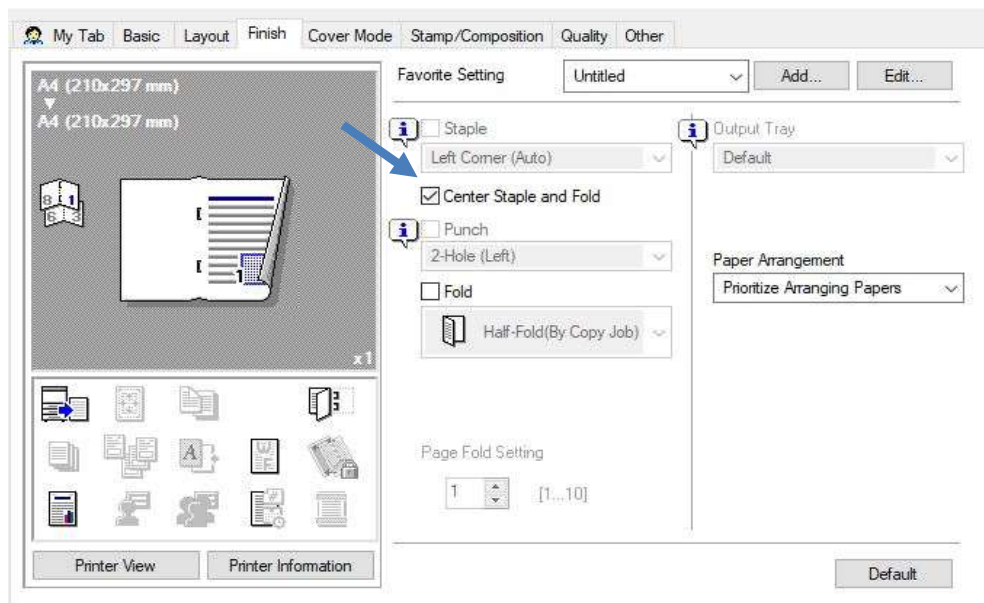
Select 'Booklet' from the Print Type menu





## HOW TO GUIDES

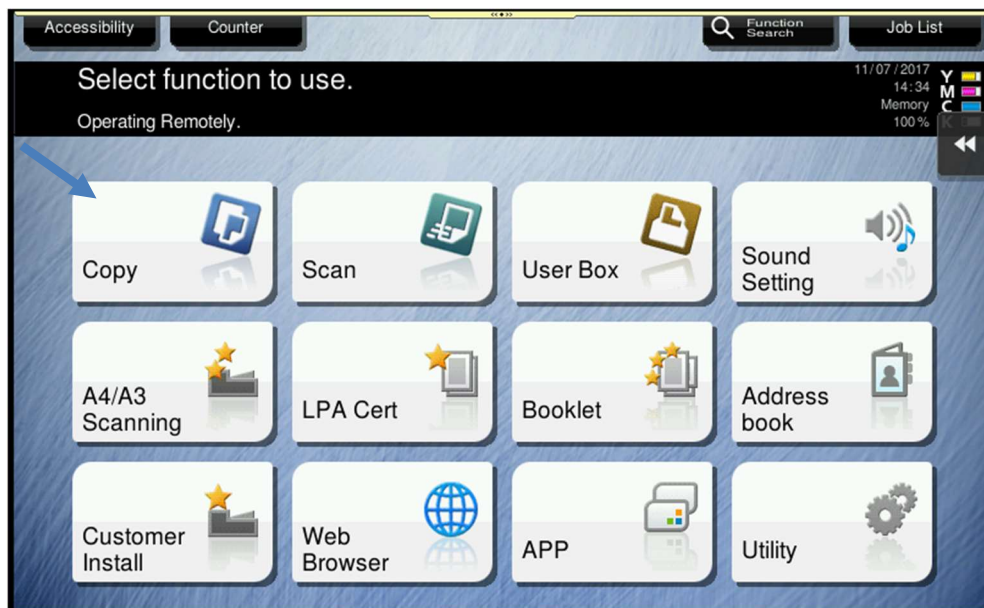
Select 'Center Staple and Fold'





## Creating a booklet with a card cover

To configure the correct paper weight – Select 'Copy'



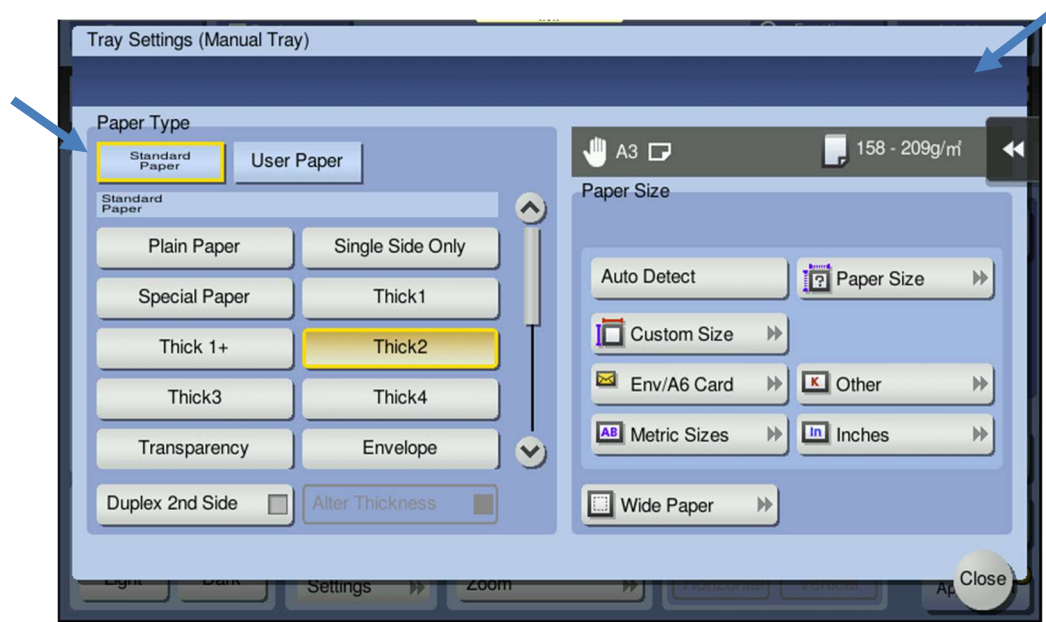
Highlight the required tray and select 'Settings'





## HOW TO GUIDES

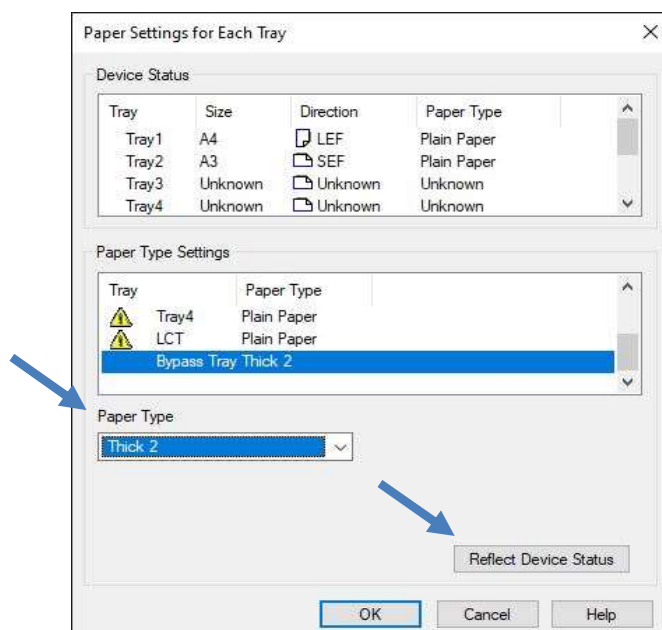
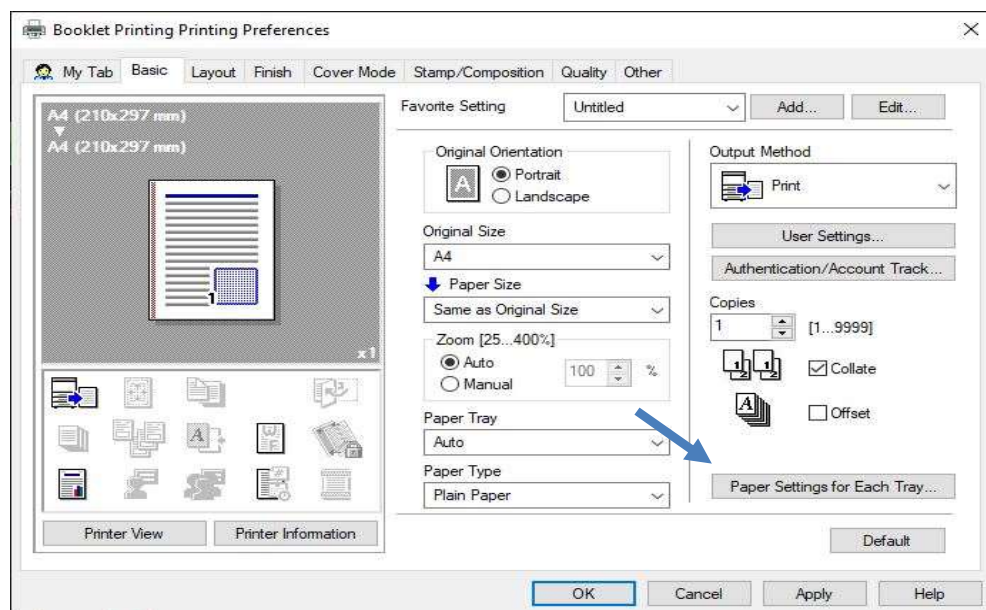
Select the required paper type – Weights are displayed on the right-hand side





### Print driver configuration

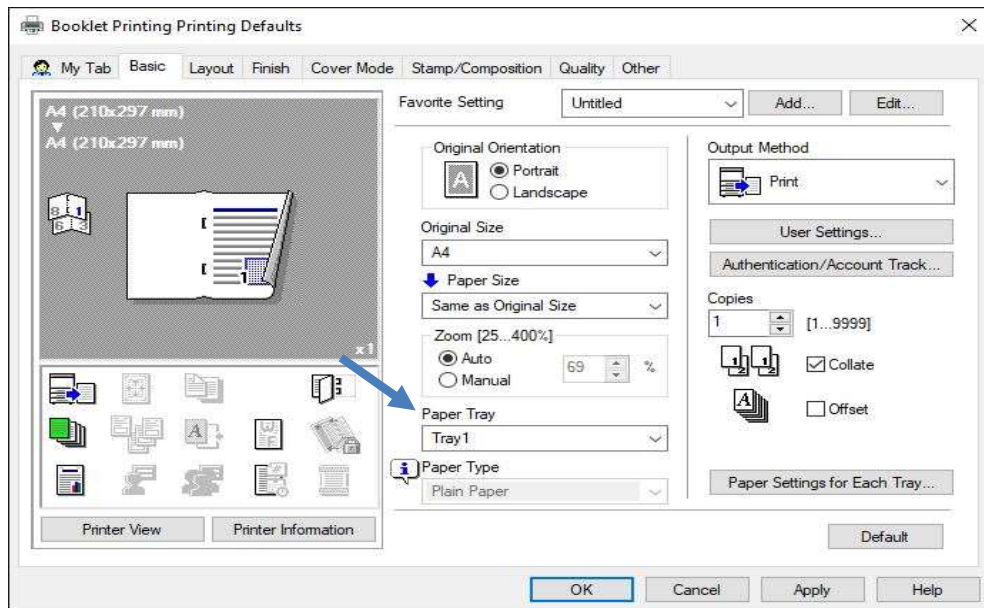
The paper weight will need to be reflected in the print driver – Select ‘Paper Settings for Each Tray’ and then select ‘Reflect Device Status’ or you can manually select the correct paper weight.





## HOW TO GUIDES

Specify the tray where your insert sheets will be loaded



Specify where your cover sheets are loaded

