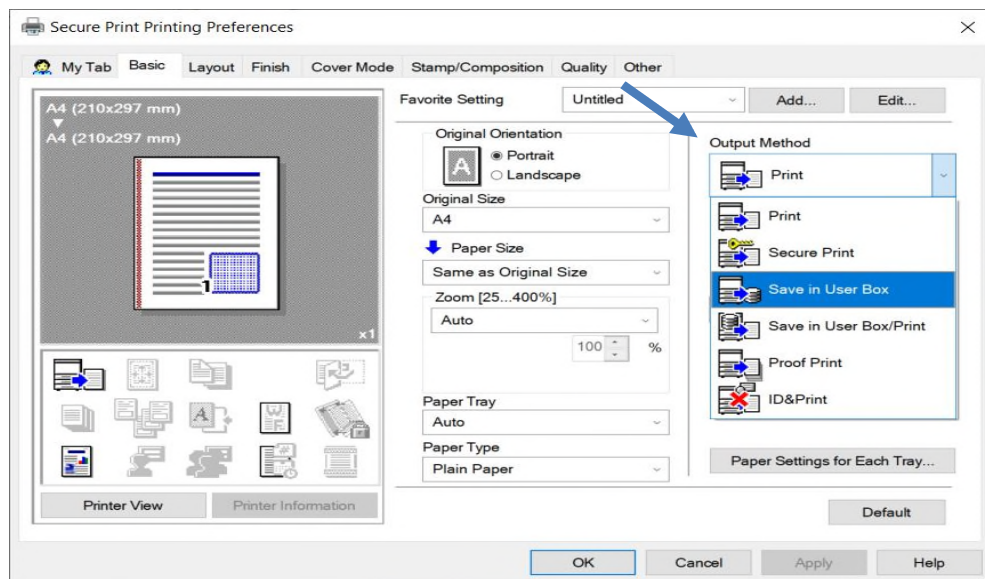




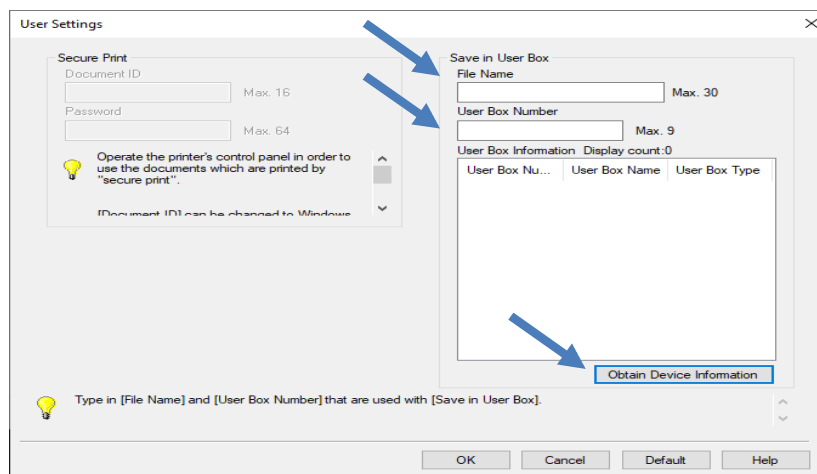
The following guide will help you print to a User Box

### Printing to a User Box

Start by opening the Printing Preferences and use the Output Method dropdown to select Save in User Box



The next dialogue box will allow you to enter a File Name & User Box Number. If you are unsure what your box number is, press Obtain Device Information to display the current User Box list configured on your device

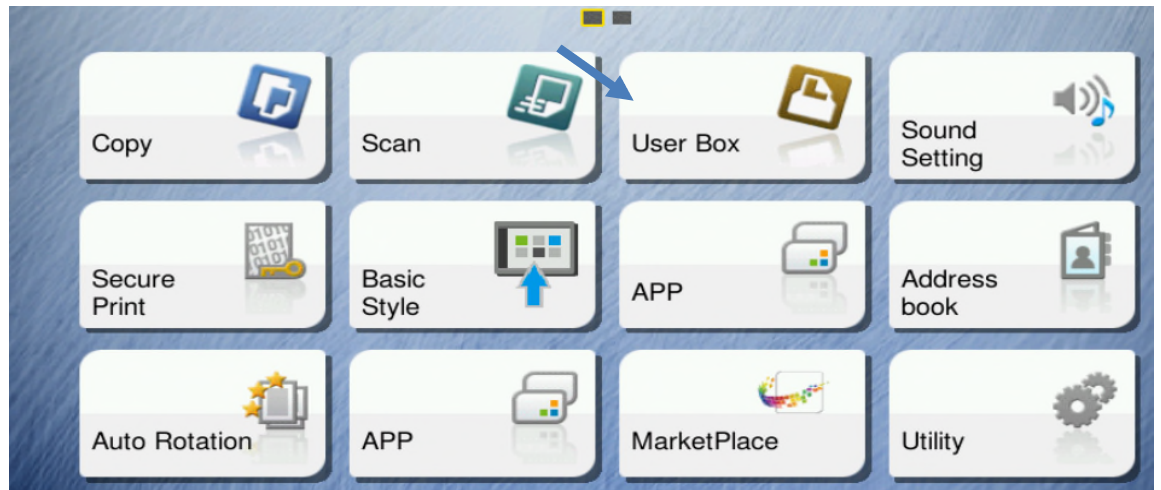


You are now ready to print, press OK twice and print

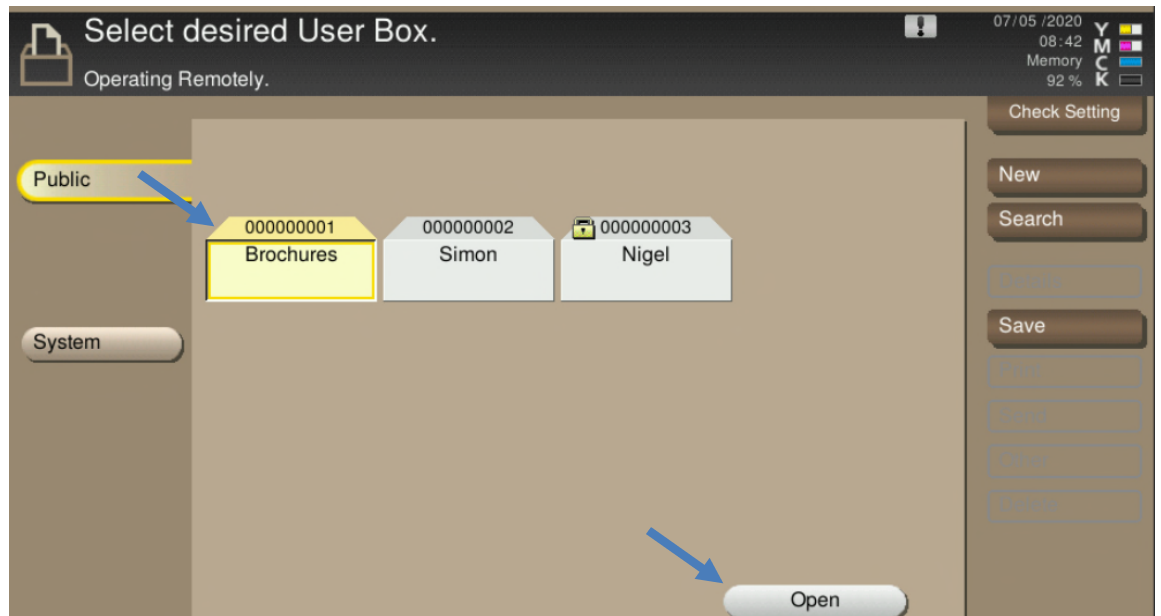


## Printing documents from a User Box

Select User Box



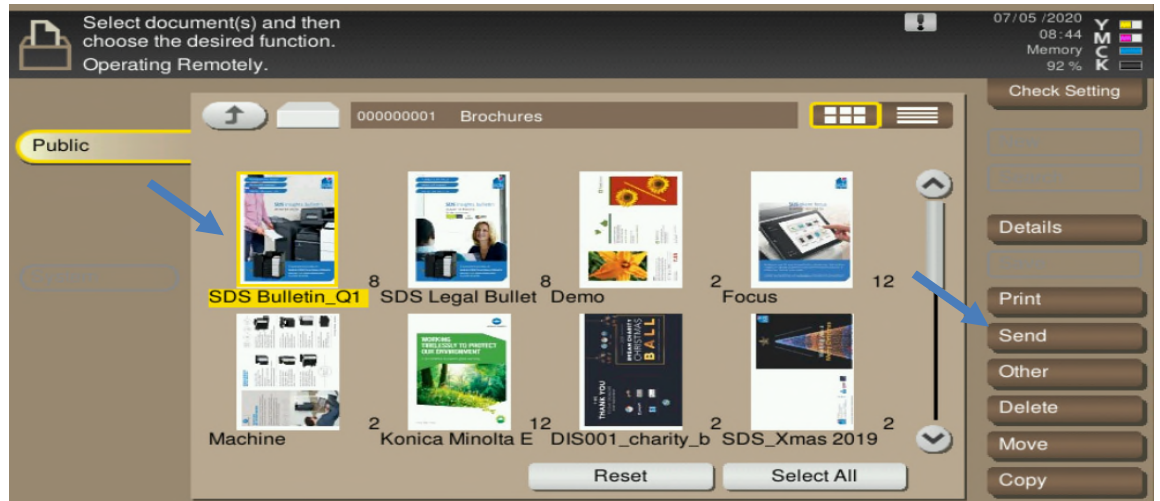
Select your User Box and select Open



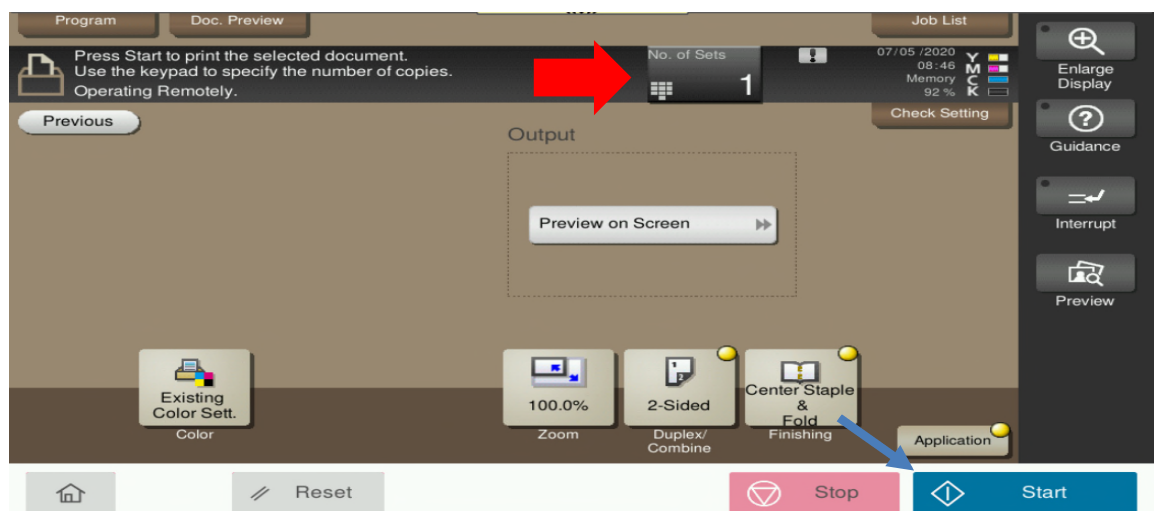


## HOW TO GUIDES

Select a file to print and press Print



Specify print options as needed. Use the Start key to start printing.



Documents saved in a User Box will be stored as one set, regardless of how many sets you specify in the print driver or application, however, you have the option to specify sets at the top of the screen.

Disappointed with this limitation? Want another solution?

Click here to find out more - <https://foldr.sdsltd.uk.com/public/5PBN8>